

PART OF THE N.W. 1\4, OF SECTION 21, T.6N., R.2E., S.L.B. & M.

# RHEES SUBDIVISION

IN WEBER COUNTY

SCALE 1" = 100'

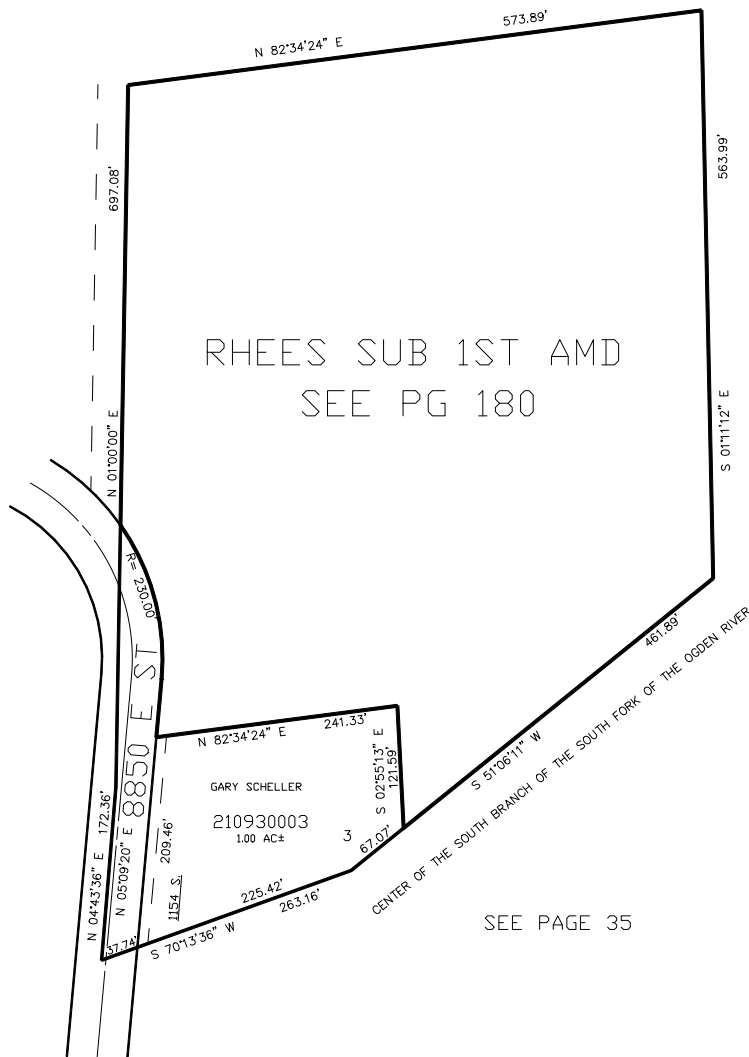
TAXING UNIT: 58

SEE PAGE 35

SEE PAGE 35

SEE PAGE 35

SEE PAGE 35



10' UTILITY & DRAINAGE EASEMENTS EACH SIDE OF PROPERTY LINES AS INDICATED BY DASHED LINES EXCEPT AS OTHERWISE SHOWN.

FOR COMPLETE ENG DATA SEE ORIGINAL DEDICATION PLAT IN BOOK 52, PAGE 82 OF RECORDS.